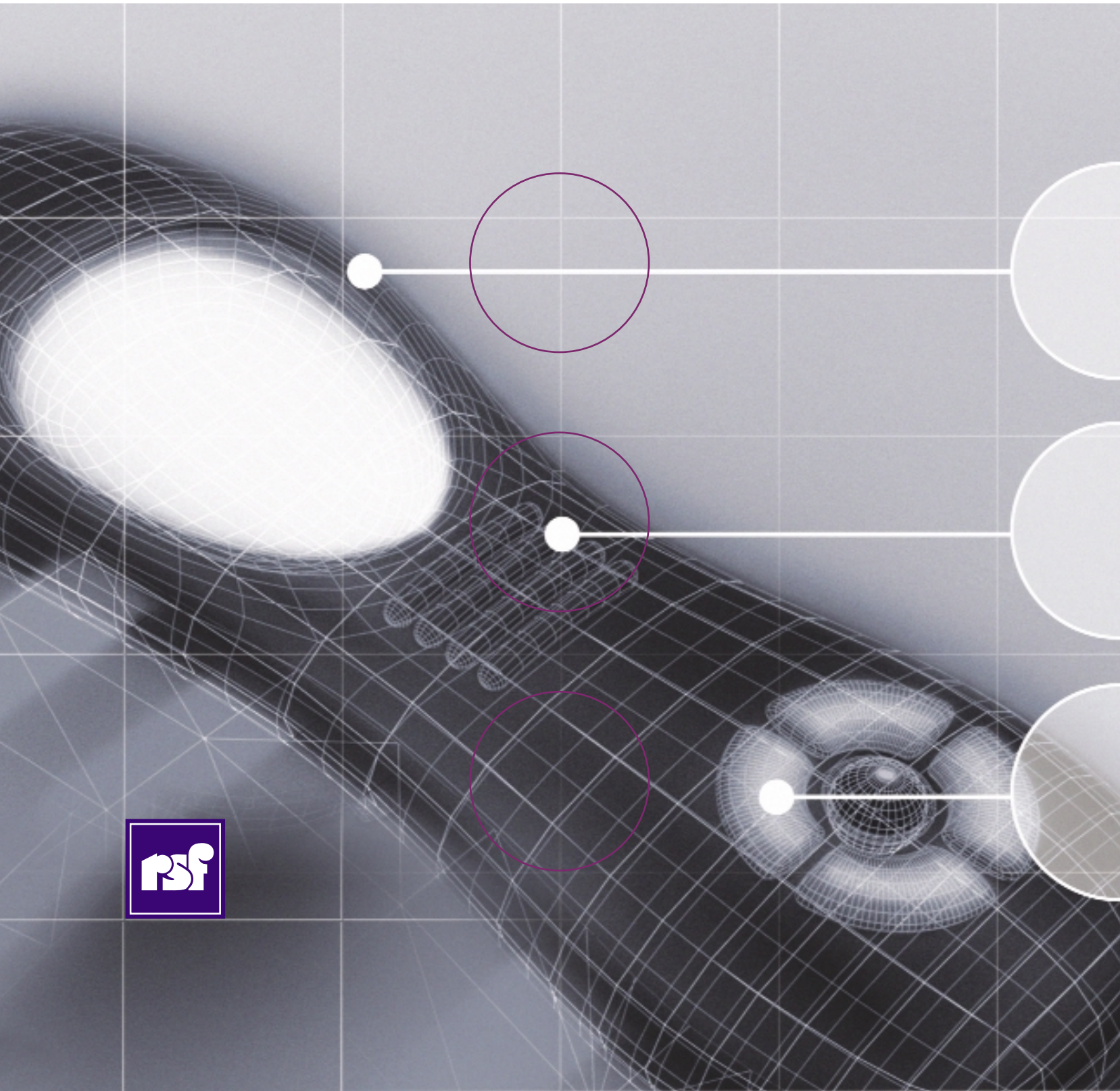


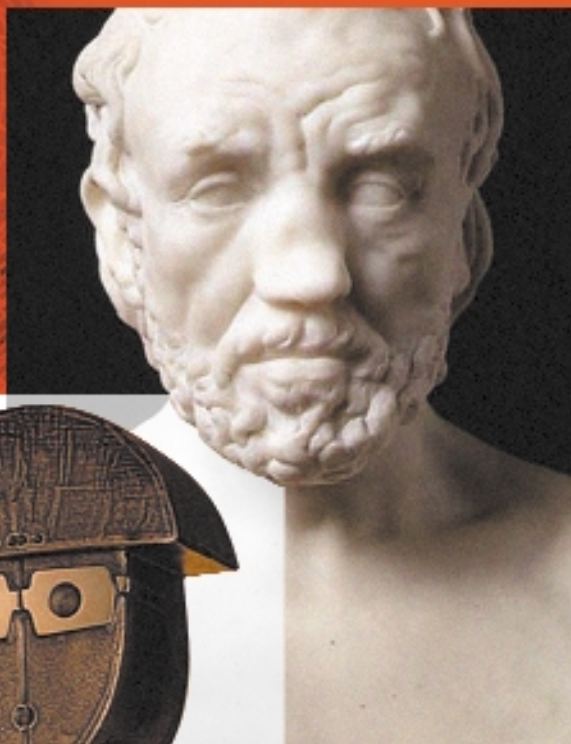
art is everywhere ...



... listen to it



**Raffaello Sanzio di Raphaël**  
the angel  
oil on canvas, circa 1513



**Auguste Rodin**  
the man with the  
broken nose  
marble, 1865



**Hubert Minnebo**  
the soldier  
bronze, 1992



# RSF Conveyor of emotions



## The difference is the technology

RSF is currently one of the world's leading producers of Audio Guide systems and audiovisual equipment specially designed for museums and theme parks.

Drawing on its specialist knowledge in the audiovisual world and keen to meet the demands in this field, RSF has built its entire reputation on the basis of its innovations.

By addressing the specific needs and offering new solutions previously considered unattainable, RSF's products combine reliability with user-friendliness, advanced features and beautiful designs.

## A tradition of innovation

With its experience since 1974 in producing analogue audio synthesisers, which at that time were considered revolutionary, RSF started developing specialist equipment for use in museums in the early 90s.

At the time, there was no audiovisual equipment available which were specially designed to meet the needs of museum users, even though there were many changes taking place in this field. So with a view to meeting exhibitors' demands, RSF set about devising new and exciting solutions, which, even today, are unique and decidedly avant-garde.

RSF has long been a pioneer of technology:

### 1991

First solid-state audio player

### 1995

First Mpeg audio player, the «ProDAP»

### 1996

First Audio Guide allowing synchronization with video

First Audio Guide with high quality sound using the Mpeg format

### 1998

First Audio Guide with flash card memory

### 2002

First satellite-triggered Audio Guide (Global Positioning System)

First Audio Guide integrating a UHF receiver for guided tours

### Other innovations include

the first Audio Guide for entirely automated tours (1997), the first battery-operated zone emitters (1998), the first software allowing advanced programming of Audio Guide tours (1999).



## Our partners and us

It is no surprise that we joined forces.

Our partners are highly creative wordsmiths who were looking for special tools to meet their demands.

We were looking for distributors to breathe life into our products.

Our partners know how to listen; they are meticulous, professional, flexible and open-minded.

We guarantee reliability, support and help, with technical solutions to match their creativity.

The fact that our partners are nearby means they can give you a service that is both tailored to your needs and local. They can even provide you with turnkey solutions, including financial options (e.g. rental, leasing or profit sharing), and sales and marketing support (e.g. flow analysis and marketing plans).

With our international presence we offer you the strength of a global perspective where you can enjoy the shared experiences and know-how of our worldwide partners.

Our common advantage is **flexibility.**

## RSF and Audio Guides

RSF offers a complete range of Audio Guides, the PortaDAP range, specifically designed for different types of project. These products are modular and offer exclusive and adaptable features.



**OPTIMA**  
the «Show»  
Audio Guide



**COMPACT**  
the «A La Carte»  
Audio Guide

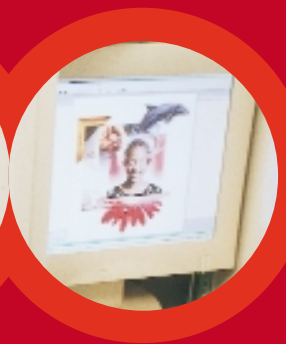
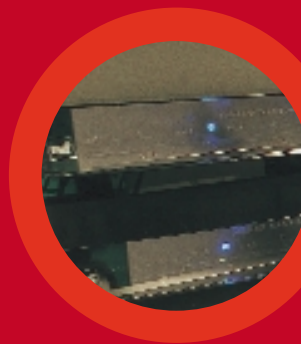


**BASIC**  
the «Smart»  
Audio Guide

## RSF and the Audiovisual

The ProDAP range is a complete range of dedicated audiovisual tools designed for intensive use in museums.

- MultiDAP** > multi-track audio player on flash card,
- ProDVP** > solid state mpeg2 video player on flash card,
- Pilote** > show controller, etc.



## Some references

### City Tour

Hollywood Walk of Fame Tour (US)  
Train City Tour of Madrid (ES)  
City Tour of Todi –PG- (IT)  
City Tour of Citta' della Pieve - PG (IT)  
Strasbourg River-Boat (FR)  
City Tour of Castiglione Del Lago - PG (IT)  
City Tour of Panicale - PG (IT)  
City Tour of Citta' Di Castello – PG (IT)  
Train City Tour of Porto Alegre (BR)  
Train City Tour of Mexico (MX)  
Train City Tour of Avignon (FR)  
Train City Tour of Cannes (FR)  
City Tour of Mons (BE)

### Exhibition

“Star Trek” Exhibition, Paramount, London (UK)  
Hermès Bags Exhibition, Worldwilde travelling Exhibition  
Renault Mondial Auto, Paris (FR)  
Faust Exhibition, Toulouse (FR)  
“(Im)perfect Man”, Dresden and Berlin (DE)  
“Eclatants Eclats” Exhibition - Archeological History, Brussels (BE)  
“Heinz Rühmann”, Berlin and Frankfurt (DE)  
“Troia – Dream and Reality”, Bonn (DE)  
Althorp, Northampton (UK)  
Louis Vuitton America’s Cup Exhibition, Worldwilde travelling Exhibition  
“Sea of Faces”, The Queen’s House - Maritime Museum, Greenwich (UK)  
“The Apocalypse of Bamberg”, Bamberg (DE)  
Exhibition Berthe Morisot, Lille (FR)  
La Belle Europe - The Age of World Fairs, Brussels (BE)  
Multimedia Show, Mons (BE)  
6th Pyramid of Shoes for Victim’s Rights, Paris (FR)  
Bourbaki Exhibition, Lucerne (CH)  
Metropolitan Fondation of Milano, “Tiwanaaku in Florence” (IT)  
Royal Belgian Institute of Natural Sciences, “Animals in Town”, Brussels (BE)  
World Expo Hannover, French Pavilion (DE)  
Yakult Exhibition, Houffalize (BE)  
“Cité de l’Espace”, Cosmic Oceans, Toulouse (FR)  
“Cité des Sciences” (La Villette), “Le Son”, Paris (FR)  
“Le Papier, c’est la Vie” Exhibition, Paris (FR)  
ExpoSports, Traveling Exhibition (BE)  
Global Art 2000, Museum Ludwig, Cologne (DE)  
Max Havelaar Exhibition, Brussels (BE)  
Saint Jacques de Compostelle Exhibition, Pons (FR)  
The Exhibition of Time, Maritime Museum, Greenwich (UK)  
The Life of the Water, Traveling Exhibition (FR)  
The Millenium Exhibition, Maritime Museum, Greenwich (UK)  
Brandt Exhibition, Paris (FR)  
Exhibition of Aoste (IT)  
Fine Arts Museum of Lille, “Goya” (FR)  
Gallery of the Water Castle Exhibition, Toulouse (FR)  
National Marine - Salon Nautique (FR)  
The Fashion Festival - Galeries Lafayette, Paris (FR)  
The Manger at the Notre Dame Cathedral of Paris (FR)  
World Expo Lisbon, French Pavilion (PT)  
“50 ans Festival d’Avignon” Exhibition, Avignon (FR)  
“The Last Continent” Exhibition, Brussels (BE)  
“Cité des Sciences” (La Villette), “Mesures et Démesures”, Paris (FR)  
Exhibition Pub Renault, Paris (FR)  
Futuroscope of Poitiers, “Gyrotour” and “Images et Studio” (FR)  
SITEF 95, The Matra Stand, Toulouse (FR)  
Wine Exhibition, Gaillac (FR)

### Fauna and flora exhibition

Cheddar Caves & Gorge, Somerset (UK)  
Branda Farm, Gironde (FR)  
Vegetarium Yves Rocher, La Gacilly (FR)  
Maritime Exhibition, Montpellier (FR)  
“Maison de la Réserve”, Besançon (FR)

### Historical Site

Stonehenge (UK)  
Ashby de la Zouche Castle, Leicester (UK)  
Berry Pomeroy, Totnes (UK)  
Hardwick Old Hall, Chesterfield (UK)

Kellie Castle, Scotland (UK)  
Kenilworth Castle (UK)  
Lanercost Priory, Brampton (UK)  
Norham Castle (UK)  
Orford Castle, Suffolk (UK)  
Porchester Castle (UK)  
Stavelot Abbey (BE)  
Stokesay Castle, Shropshire (UK)  
Walmer Castle (UK)  
Whitby Abbey (UK)  
Beaumaris Court House & Town Tour, Wales (UK)  
Belfry of Lille (FR)  
Bishop’s Palace Lincoln (UK)  
Crypte Notre Dame des Tables, Montpellier (FR)  
Derbyshire Countryside Services - High Peak Junction (UK)  
Old Wardour Castle, Salisbury (UK)  
Rievaulx Abbey, North Yorkshire (UK)  
Scarborough Castle, North Yorkshire (UK)  
Church’s Tour, Gironde (FR)  
Guard bridge, Nîmes (FR)  
HMS Trincomalee, Hartlepool (UK)  
Mine of Blegny Trembleur (BE)  
Saint Marguerite Churh, Epsig (FR)  
The Castle of Chamerolles (FR)  
The Remparts of Binche (BE)  
Ecomuseum of Bois-du-Luc, La Louvière (BE)  
Hospice of Beaunes (FR)  
Monein Church (FR)  
Portland Castle, Portland (UK)  
Guermange Church (FR)  
Fortification of Villefranche de Rouergue (FR)  
Macon Church (FR)

### Industrial Site

Museum of Gruyère, Gruyère (CH)  
Museum of the Bayonne Ham, Bayonne (FR)  
Cognac Rémy Martin, Cognac (FR)  
EDF (Electricité de France) Electrical Station , Toulouse (FR)  
Bass Museum of Brewing, Burton on Trent (UK)  
Bofferding Brewery Museum, Bascharage (LU)  
Evian Site Tour, Evian (FR)  
Gaia Creed Energy Centre, Cornwall (UK)  
Abbeydale Industrial Hamlet, Sheffield (UK)  
Eco House, Leicester (UK)  
National Theatre of Toulouse (FR)  
Peugeot Museum, Sochaux (FR)  
Redhouse Cone, Wordsley (UK)  
“Maison de la qualité”, Saint Emilion (FR)  
Exhibition Mobalpa (Kitchen), Grenoble (FR)  
Pic du Midi - Cable car , Pyrénées (FR)  
Stadium of Bordeaux (FR)  
Roquefort cheese cellar, Roquefort (FR)  
Hippodrome of Longchamps, Paris (FR)  
Museum of Calor (FR)

### Museum

Fine Arts Museum of Lille (FR)  
Bank of England Museum, London (UK)  
Nibelungen Museum, Worms (DE)  
Film Museum, Berlin (DE)  
The Oceanography Museum, Monaco (MC)  
Prehistoric Museum, Tautavel (FR)  
Pinacoteca, Città di Castello - PG (IT)  
Pinacoteca, Castiglione del Lago - PG (IT)  
Focke Museum, District Mus. Of Art and Culture, Bremen (DE)  
Federal Gallery for Art and Exhibitions, Bonn (DE)  
“Romantic Paths” in Cottbus/Branitz Castle (DE)  
Fan Museum, Greenwich (UK)  
Hermann Hesse Museum, Calw (DE)  
Museum im Burghof , Lörrach (DE)  
Museum of Buon Convento – PG (IT)  
Museum of Costacciaro – PG (IT)  
Ranger’s House, Greenwich (UK)  
Sugar Museum, Tienen (BE)  
Temple Newsam, Leeds (UK)  
Daetz-Centre for wood carving, Lichtenstein (DE)  
Malraux Museum, Le Havre (FR)  
National Maritime Museum, Greenwich (UK)  
National Museum of Marble, Rance (BE)  
Omnia -St James Museum, Guernsey (UK)  
Pitshanger Manor, Ealing (UK)

Russell-Cotes Art Gallery and Museum, Bournemouth (UK)  
William Herschel Museum, Bath (UK)  
“Arithmeum”, Bonn (DE)  
“Domaine des Boissets”, Loire Wine, Sainte Enimie (FR)  
“La Maison des Marais Mouillés”, Poitou (FR)  
“Prehistorical Museum of Lower Bavaria”, Landau / Isar (DE)  
Derby Museum and Art Gallery, Derbyshire (UK)  
Guttenberg Museum, Fribourg (CH)  
Jazz Museum, Marciac (FR)  
Jean Vier Museum, Pau (FR)  
Mining Museum of Aubin, Aveyron (FR)  
Mining Museum of Saint Bel, Lyon (FR)  
Steam - Museum of the Great Western Railway, Swindon (UK)  
The Masters of Fire, Amay (BE)  
The Territories of Memory, Liège (BE)  
Arsène Lupin Museum, Etrétat (FR)  
Bantock House, Wolverhampton (UK)  
Dutch Theater Museum, Amsterdam (NL)  
Erasmus Darwin House, Lichfield (UK)  
Halles Saint Géry, Brussels (BE)  
House of Craft, Colmar (FR)  
Jeanne d’Arc Museum (FR)  
Maritime Museum of La Rochelle (FR)  
Museum of the public transport of Liège (BE)  
Museum of the Wool and Fashion, Verviers (BE)  
Strasbourg Distillery (FR)  
The Public Transport Museum of Liège (BE)  
Aerospatial Museum, Le Bourget (FR)  
Birmingham Art Gallery and Museum, West Midlands (UK)  
Clepsydre la Vilette, Paris (FR)  
Erik Satie Museum, Honfleur (FR)  
Fries Museum, Leeuwarden (NL)  
House of Wolves, Orlu (FR)  
Mining Museum, St Lary (FR)  
Museum of Bells, Hérépien (FR)  
Museum of Bribacte, Mont Beuvray (FR)  
Museum of D’Artagnan, Lupiac (FR)  
Museum of Space, Kourou (FR)  
Museum of Train, Treignes (BE)  
Grévin Museum, Paris (FR)  
Museum of Wine, Gaillac (FR)  
Sea Museum, Biarritz (FR)  
Archeoscope of Vielsalm (BE)  
Gallo-Romain Museum, St Romain en Gal (FR)  
Neanderthal Museum, Mettmann (DE)  
Sciences and Industry Museum, Motor Vehicle, Paris (FR)  
Center of Discovery “Captiva”, Lyon (FR)  
Human Museum, Paris (FR)  
Museum of Animatronics, Clairac (FR)  
Automatic Theatre, Maurice Isles (FR)  
Cellar of Buzet (FR)  
History Museum : Espace Meiofaune, Paris (FR)  
House of Dordogne (FR)  
Museum of Hunting and Birds, Orthez (FR)  
Cisterciensian Monastery Zwettl (AT)  
Baroque Art Museum, Savoie (FR)

### Park

“Cité de l’Espace”, Toulouse (FR)  
Prehistoric Park at Tarascon (FR)  
Futuroscope of Poitiers, Pavilions’ Presentation (FR)  
Disneyland, Central Square, Marne La Vallée (FR)  
Maggiore Island and Lago Trasimeno - PG (IT)  
Houtopia, City of Children, Houffalize (BE)  
Pavillon de Promotion du Tourisme, Bastogne (BE)  
“Campo del Sole”, Tuoro s.t. - PG (IT)  
Park of Monte Peglia (TR) – PG (IT)  
Vulcania, Auvergne (FR)  
Euro Space Center, Redu (BE)  
Oceanopolis - Marine Sciences theme park, Brest (FR)  
Astérix Park, Paris (FR)  
Mir Station - City of Space, Toulouse (FR)  
Space Experience - Nigloland, Aube (FR)  
“Cité des Sciences” (La Villette), Paris (FR)  
Regional Natural Park of Lorraine, “Maison des Etangs”, Lorraine (FR)  
Park of Volcano at Auvergne (FR)  
Park and Gardens, Toulouse (FR)  
“Cité de la Mer”, Cherbourg (FR)  
Gyrotour Futuroscope, Poitiers (FR)  
Mary Poppins Attraction Disneyland, Paris (FR)



**Manufacturer**

RSF 45, Av. Marcel Dassault  
31500 Toulouse - France  
Tél.+33 561 207 909 - Fax+33 561 800 094  
rsf@rsf-europe.com



**Commercial division**

43a, Rue Principale  
L-8376 Kahler  
Luxembourg  
Tel. +352 49 74 20 40  
Fax +352 49 74 20 50  
info@rsf-europe.com



**RSF around the world:**

[WWW.RSF-EUROPE.COM](http://WWW.RSF-EUROPE.COM)